

A comprehensive approach to **hand hygiene, water quality** and **sanitation** in **primary health care and schools** not connected to functional water supply system

Current situation

50%
of schools

do **not** have access to **handwashing, basic hygiene** and **water supply** in low-income countries

source: JMP Global Baseline Report - 2019

45%
of primary health care facilities

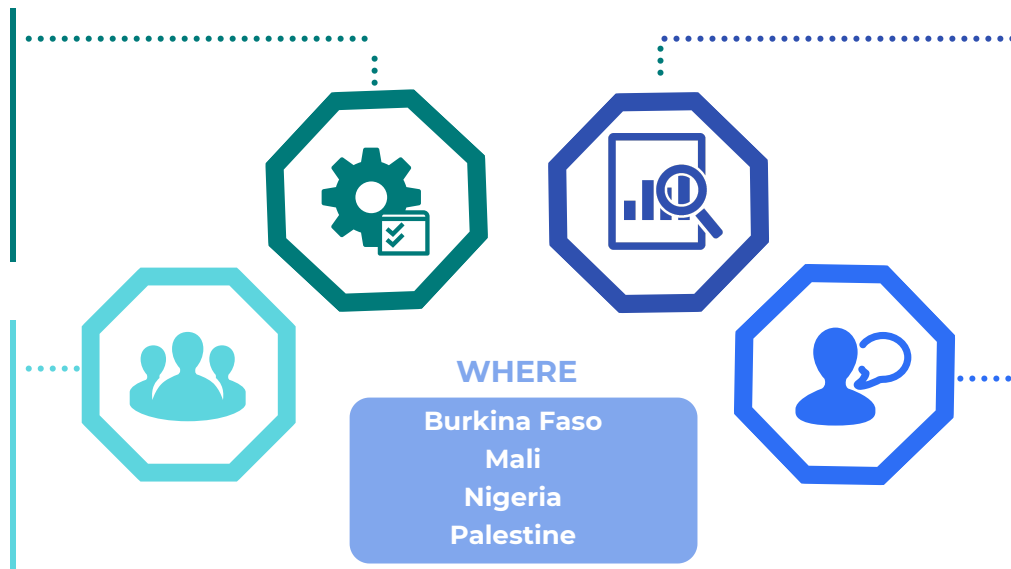
Approach and sectors of intervention

Technical Innovation

- Gravit'eau handwashing systems recycling water
- Evaluate available technologies from positive past experiences
- Alternative disinfection methods
- On-site water treatment

Stakeholders

- National / International level
- Authorities / Organisations
- Private sector / Academia
- Feedback and suggestion
- Participation in decisions



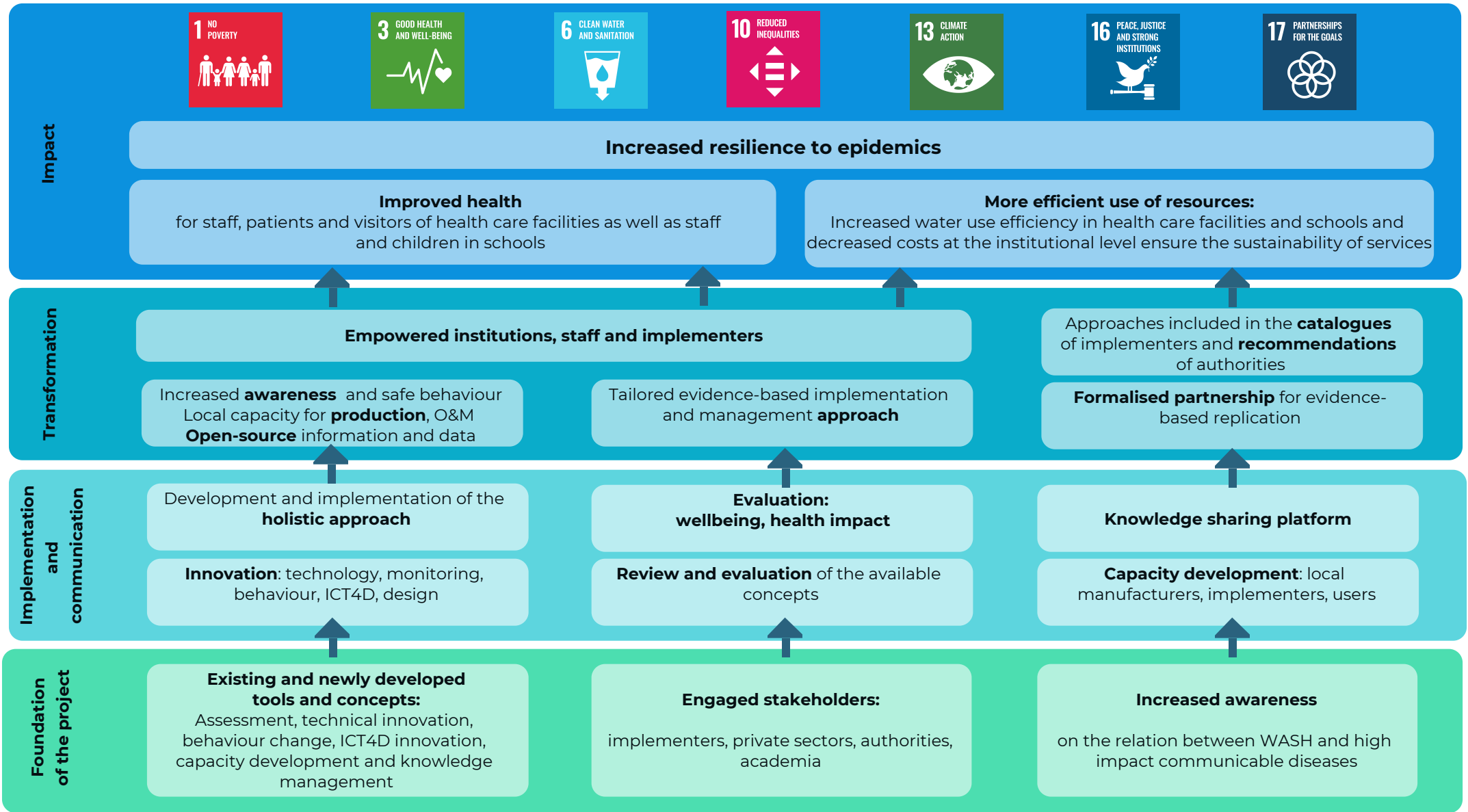
Data management and monitoring

- FACET: Facility monitoring and evaluation tool
- Online monitoring using LoRaWAN data transmission
- Open-source knowledge platform

Social Science and Health

- User-centred design for local production
- RANAS: systematic behavioural change approach
- Health impact and health benefit evaluation
- Genderised WASH

Pathway to impact



Project partners

Academia

n|w University of Applied Sciences and Art Northwestern Switzerland

EPFL

Swiss TPH Swiss Tropical and Public Health Institute

University of Maiduguri (Faculty of Engineering)

Private

RANAS SPIN-OFF of Eawag
We Understand Behaviour Change

MARTIN

INGO

Terre des hommes Aide à l'enfance.

MEDECINS SANS FRONTIERE DOCTORS WITHOUT BORDER

skat foundation

CESVI

Donor:

Schweizerische Eidgenossenschaft
Confédération suisse
Confederazione Svizzera
Confederaziun svizra

Swiss Agency for Development and Cooperation SDC